

# BENCHMARK PROJECT MANAGEMENT (UK) LTD CASE STUDY

## Title

MOD Abbeywood: Cycle Storage Hubs.

## General Scope:

Phase1: Investigate and produce a design for two Cycle Storage Structures able to accommodate approx. 300 bicycles. Phase 2: Undertake the Site Clearance, Ground and Civils works, including the supply and installation of the two cycle storage hubs incorporating a two-tier cycle racking system.

## Works included:

- GPR, Utility and Topographical Surveys.
- Full project design, including lighting.
- Site clearance & excavation to formation.
- Erection of timber formwork.
- Installation of steel fabric mesh and cut and bent reinforcing bar.
- Pump and finish 2 large concrete slabs.
- Installation of two galvanized steel cycle storage hubs with two tier rack system.
- Hard and soft landscaping to the surrounding areas, including a link footpath network, with pedestrian crossing points and powder coated handrails.

## Duration:

30 Weeks

## Client:

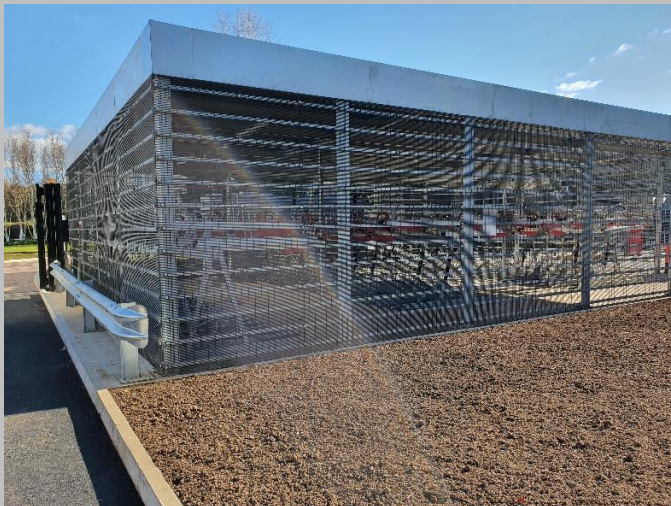
Amey Defence Services

## Value:

£483,000.00

## Innovation:

- The end user required an increase in cycle storage, outside of the inner zone fence line. Benchmark were tasked with surveying the site to locate and identify suitable areas and then produce a design fitting of those areas to meet the new storage requirements.



## Customer Comments:

*"Our client is extremely happy with the new facilities. Well done".*

Amey Project Manager

For more information contact:

Lee Probert – Managing Director 01275 545 290

[enquires@benchmarkpm.co.uk](mailto:enquires@benchmarkpm.co.uk)

[www.benchmarkpm.co.uk](http://www.benchmarkpm.co.uk)

# BENCHMARK PROJECT MANAGEMENT (UK) LTD CASE STUDY



For more information contact:

Lee Probert – Managing Director 01275 545 290

[enquires@benchmarkpm.co.uk](mailto:enquires@benchmarkpm.co.uk)

[www.benchmarkpm.co.uk](http://www.benchmarkpm.co.uk)

# BENCHMARK PROJECT MANAGEMENT (UK) LTD CASE STUDY



For more information contact:

Lee Probert – Managing Director 01275 545 290

[enquires@benchmarkpm.co.uk](mailto:enquires@benchmarkpm.co.uk)

[www.benchmarkpm.co.uk](http://www.benchmarkpm.co.uk)