

# BENCHMARK PROJECT MANAGEMENT (UK) LTD CASE STUDY

## Title:

MOD Abbey Wood: Motorcycle Storage Unit

## General Scope:

To construct a bespoke covered motorcycle parking area to assist with the reduction of cars on site, improve customer experience and assist with improvements to the working headquarters environment. In full compliance with RIBA Stage 4.

## Works included:

- Ground Penetration Radar Survey & establishment of existing services.
- Site clearance & excavation of existing kerb-lines.
- Excavate for foundation bases & dispose of spoils off site.
- Erection of timber formwork & suspend holding down bolts.
- Installation of steel fabric mesh and reinforcing bar.
- Cast new concrete pad foundations.
- Installation of Broxap shelter. Approximately 39m in length with the capacity to hold 32 motorcycles.
- Lay new HB2 kerbs around new shelter.
- Install new service ducting from feeder pillar and provide electric power supply to new motorcycle shelter.
- Connect shelter down pipe to storm water pipe and run to new filter drain constructed in adjacent verge
- Reinstate car park surfaces with asphalt & over-band patches.
- Lay new thermoplastic line markings to motorcycle bays.
- Hard and soft landscaping to the surrounding verges.

## Duration:

8 Weeks

## Client:

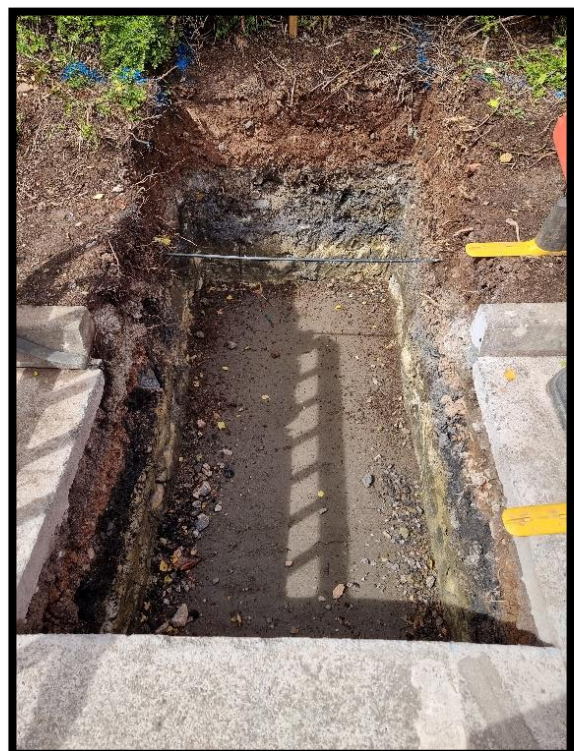
Amey Defence Services

## Value:

£249,000.00

## Innovation:

- Due to complications with the original lighting design Benchmark worked with the client onsite to come up with an alternative solution, to overcome the installation problems.



For more information contact:

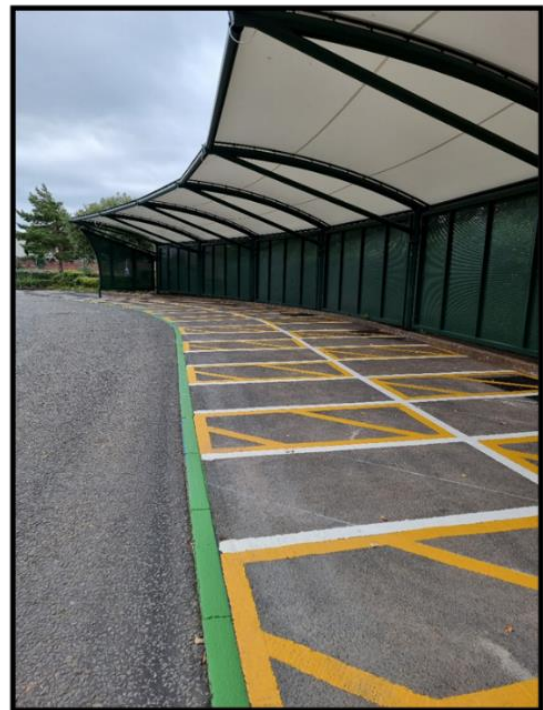
Lee Probert – Managing Director 01275 545 290

[enquires@benchmarkpm.co.uk](mailto:enquires@benchmarkpm.co.uk)

[www.benchmarkpm.co.uk](http://www.benchmarkpm.co.uk)



## BENCHMARK PROJECT MANAGEMENT (UK) LTD CASE STUDY



### Customer Comments:

"We are very pleased with the end result. You managed to solve any design or practical issues without asking for additional funds which always goes down well. The canopy looks really neat. We also appreciate the attention to detail with the hard and soft landscaping finishings. It's often the finer details that let contractor's down so well done all round."

Amey QS - Client

For more information contact:

Lee Probert – Managing Director 01275 545 290

[enquires@benchmarkpm.co.uk](mailto:enquires@benchmarkpm.co.uk)

[www.benchmarkpm.co.uk](http://www.benchmarkpm.co.uk)