

BENCHMARK PROJECT MANAGEMENT (UK) LTD CASE STUDY

Title

Temporary Military Kitchen & Dining Facility at Netheravon Airfield

General Scope:

Provide and install temporary prefabricated modular kitchens & dining facility and hire for 2 years.

Works included:

- Site Investigation: GPR & Topographical Surveys, Ground Investigation (CBR, Waste Classification, Asbestos & Percolation Tests) and CCTV Survey of Drains.
- Provide Construction Design of Kitchen Facility Including All Groundworks, Utilities, Emergency Lighting & Fire Alarms to Complete the Building Regulation Package.
- Topsoil Strip & Earthworks
- Construction of 59no. Various Sized Concrete Foundation Pads.
- Installation of Foul Carrier Drains, Manholes & a Sustainable Urban Drainage System (SUDs) for Rainwater.
- Installation, by Crane, of the Modular Units to Form the Kitchen, Dining Hall, Cold Room & Toilet Facilities.
- Installation of Timber Entry / Exit Ramps & Emergency Exit Steps
- Installation of Utilities, Such as Mains Water, Electric, Emergency Lighting & a Fire Alarm System Remotely Linked to the Guardhouse.
- Construction of an Asphalt Link Footpath.
- Construction of an Asphalt Hard Standing Area for Deliveries.
- Installation of a Timber Construction Bin Store.
- Filter Drains Around Modular Units
- Topsoiling & Grass Seeding.

Duration:

Design & Build - 8 Months

Client:

Amey Defence Services

Value:

£620,000.00

Innovation:

- As the prefabricated modular units were not designed for the installation of guttering there was no way of collecting the rainwater from the roofs. To avoid the water saturating the ground around the foundations, Benchmark designed and installed a clean stone filter drain around the perimeter with a bespoke catchment system on-top the foundations, below the units.



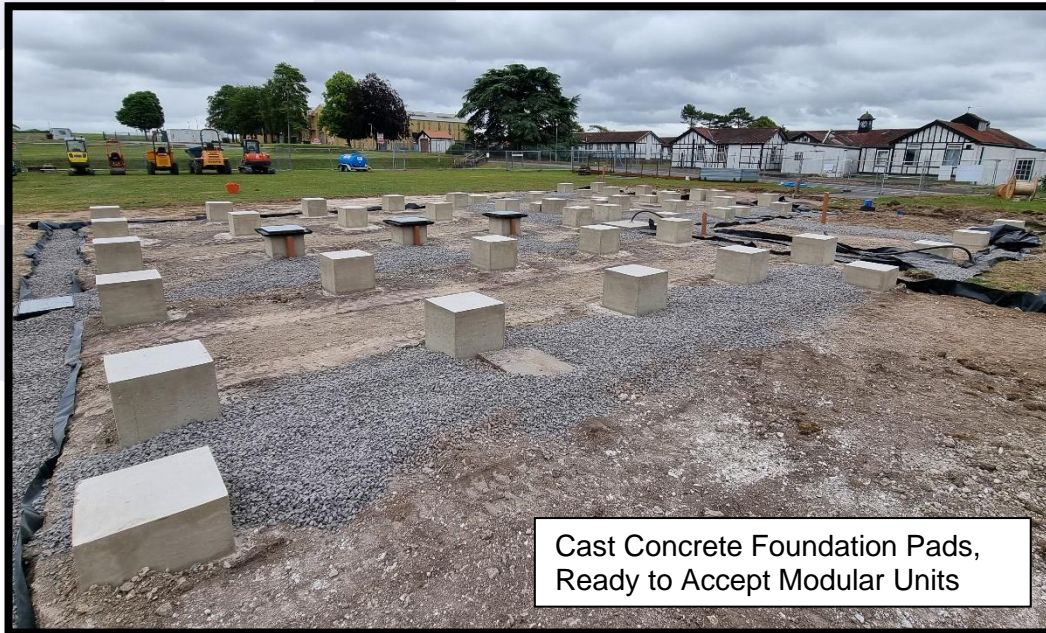
For more information contact:

Lee Probert – Managing Director 01275 545 290

enquires@benchmarkpm.co.uk

www.benchmarkpm.co.uk

BENCHMARK PROJECT MANAGEMENT (UK) LTD CASE STUDY



Cast Concrete Foundation Pads,
Ready to Accept Modular Units



Bespoke water catchment system
designed for the foundation pads.



For more information contact:

Lee Probert – Managing Director 01275 545 290

enquires@benchmarkpm.co.uk

www.benchmarkpm.co.uk

BENCHMARK PROJECT MANAGEMENT (UK) LTD CASE STUDY



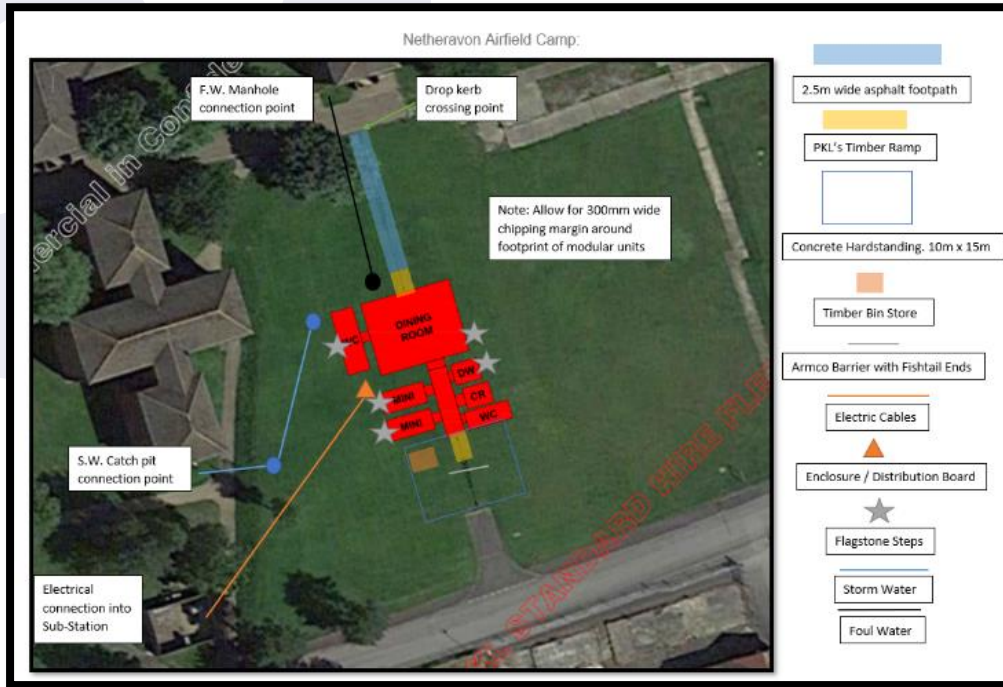
For more information contact:

Lee Probert – Managing Director 01275 545 290

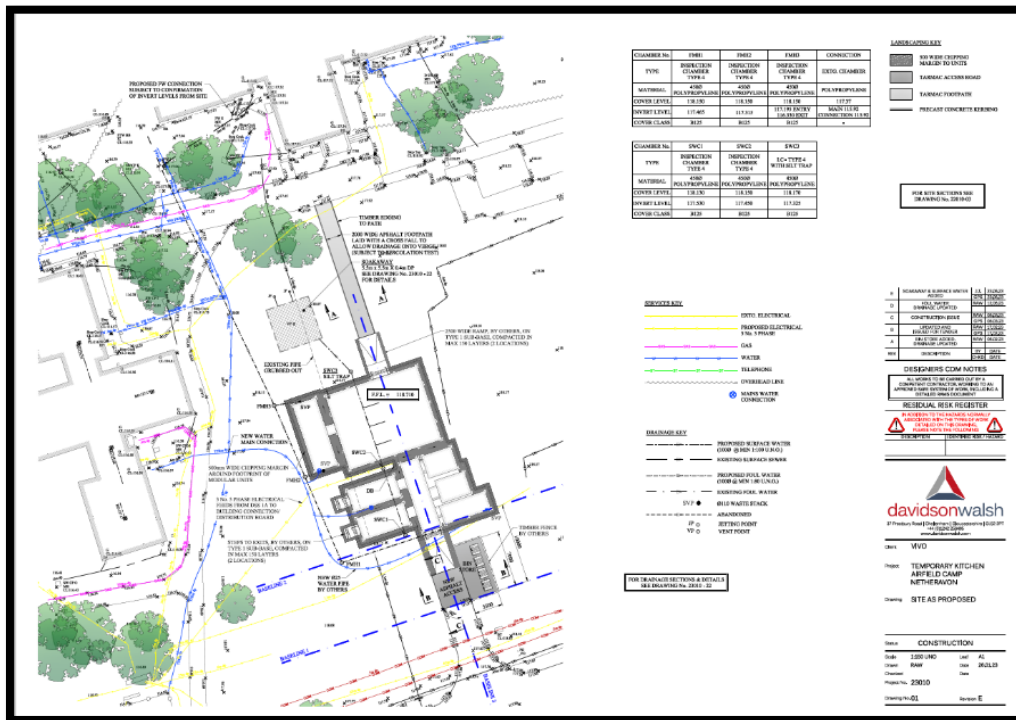
enquires@benchmarkpm.co.uk

www.benchmarkpm.co.uk

BENCHMARK PROJECT MANAGEMENT (UK) LTD CASE STUDY



Concept Design Produced by BPM for VIVO Budget Analysis.



Designers General Arrangement Plan Drawing

Customer Comments:
"Write customer comment here"
 VIVO Project Manager

For more information contact:
 Lee Probert – Managing Director 01275 545 290
enquires@benchmarkpm.co.uk
www.benchmarkpm.co.uk

